

## MUMBAI SINGLE PENDANT FITTING INSTALLATION INSTRUCTIONS

These instructions are provided for your safety.  
Please read carefully before commencing work and retain for future reference.

### SAFETY INFORMATION

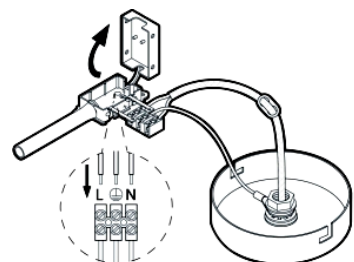
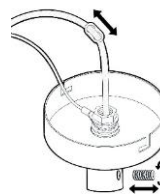
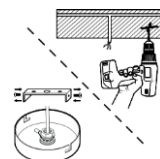
- \* If you are in any doubt consult a person competent to give advice on the installation of electrical equipment.
- \* This fitting should be fitted in accordance with IEE Wiring Regulations and the Building Regulations
- \* To prevent electrocution switch off at the mains supply before installing or maintaining this fitting. Ensure other persons cannot restore the electricity supply without your knowledge.
- \* To avoid damage to concealed wiring during installation, establish the direction of the supply cable before drilling fixing holes.
- \* This fitting is Class 1 =  $\perp$  and should be fitted to a lighting supply (with earth) protected by a 5 amp fuse or equivalent circuit breaker.
- \* Always be sure to use the correct type and wattage of bulbs as indicated on the fitting. Never exceed the wattage stated.
- \* When changing the bulb, always switch off at the mains and allow the old bulb to cool down before handling. Dispose of used bulbs carefully.

### INSTALLATION

1. Ensure the house electricity supply is off at the fuse board.
2. If you are fitting this product in place of an existing fitting, you may find that there are more than 3 sets of cables connected within the rose. Before removing existing rose, carefully note position of each set of cables. If there are loop in cables that are not connected to the light these must be terminated in a separate terminal block not connected to fitting.
3. Remove mounting bracket from fitting by removing 2 x screws located on the side, keep the screws for later.
4. Using mounting bracket as a template, mark and then drill the fixing holes in the ceiling. (Ensure the holes are drilled into a joist or other suitable mounting.)
5. Attach mounting bracket to the ceiling using suitable fixings. Ensure screws are firmly fixed into a ceiling joist or other suitable mounting and not just the plaster.
6. **Height adjustment: To shorten suspension wire:** use a screwdriver to undo 2 small screws located on metal tube located main body end of suspension wire. To shorten, adjust wire position along the loop as required. Use a screw driver to tighten the two small screws fully, ensure screws are sufficiently tight to support the weight of the fitting. Excess suspension wire must be trimmed appropriately.  
**Cable adjustment:** Release cable restraint on mounting bracket by loosening the screw(s). Adjust height by moving the 'figure 8' shaped cable restraint along the cable as required and then ensure cable restraint is resting on ceiling cup. Tighten the plastic screw located on the ceiling cup whilst **taking care not to over tighten**. Trim the electrical wires as required and re-terminate wires into the terminal blocks as required ensuring no loose strands are present.
7. Weight of fitting must be supported whilst making the connections as follows:
 

Connect supply live (normally brown or red) to fitting live (marked "L") on the terminal block.  
Connect supply neutral (normally blue or black) to fitting neutral (marked "N") on the terminal block.  
Connect the earth (normally green/yellow or unsheathed) to terminal block marked  $\perp$  on the fitting.

Ensure electrical connections are tight and no loose strands of wire are left out of the terminal block. Ensure terminals and rubber sleeve is correctly seated then close connector block housing by snapping together.
8. Attach the fitting to the mounting bracket using 2 screws removed earlier. **Take care not to trap any wires in the process.** It may be necessary to fit any excess cable into the ceiling void to enable ceiling cup fitment.
9. Fit bulb (**not supplied**): type and wattage as indicated on the fitting. **The wattage indicated must not be exceeded.**
10. Switch on the electricity supply at the fuse board.



### GENERAL INFORMATION

This fitting is designed for internal use only and must be fitted to a DRY SURFACE as any dampness in plaster or paint can damage the finish. **Do not use polish or abrasive cleaner - just a soft dry cloth.**